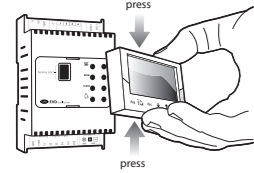




LEGGI E CONSERVA QUESTE ISTRUZIONI
READ AND SAVE THESE INSTRUCTIONS
NO POWER & SIGNAL CABLES TOGETHER
READ CAREFULLY IN THE TEXT

Display board mounting



Refrigerant compatibility

R22; R134a; R404A; R407C; R410A; R507A; R290; R600; R600a; R717; R744; R728; R1270; R417A; R422D; R413A; R422A; R423A; R407A; R427A; R245Fa; R407F; R32; HTR01; HTR02; R23; R1234yf; R1234ze; R455A; R170; R442A; R447A; R448A; R449A; R450A; R452A; R508B; R452B; R513A; R454B; R458A

Table of product codes

EVD evolution		display (accessory)	
code	description	code	description
EVD0000E00	EVD Evolution universal (tLAN)	EVDIS00CNO	Display (Chinese)
EVD0000E01	EVD Evolution universal (tLAN), 10 pz* (pcs)	EVDIS00CZO	Display (Czech)
EVD0000E10	EVD Evolution universal (pLAN)	EVDIS00DE0	Display (German)
EVD0000E11	EVD Evolution universal (pLAN), 10 pz* (pcs)	EVDIS00E00	Display (English)
EVD0000E20	EVD Evolution universal (RS485/Modbus*)	EVDIS00E01	Display (Spanish)
EVD0000E21	EVD Evolution universal (RS485/Modbus*), 10 pz* (pcs)	EVDIS00F00	Display (French)
EVD0000E30	EVD Evolution for CAREL valves (tLAN)	EVDIS00I00	Display (Italian)
EVD0000E31	EVD Evolution for CAREL valves (tLAN), 10 pz* (pcs)	EVDIS00J00	Display (Japanese)
EVD0000E40	EVD Evolution for CAREL valves (pLAN)	EVDIS00P00	Display (Polish)
EVD0000E41	EVD Evolution for CAREL valves (pLAN), 10 pz* (pcs)	EVDIS00PT0	Display (Portuguese)
EVD0000E50	EVD Evolution for CAREL valves (RS485/Modbus*)	EVDIS00RU0	Display (Russian)
EVD0000E51	EVD Evolution for CAREL valves (RS485/Modbus*), 10 pz* (pcs)	EVDIS00SE0	Display (Swedish)
EVD0002E10	EVD Evolution universal optoisolated (pLAN)	other accessories	
EVD0002E20	EVD Evolution universal optoisolated (RS485/Modbus*)	EVDCON0021	Connector kit 10 pcs
		EVDICNV00E0	USB/tLAN converter
		TRADRFE240	35VA transformer
		EVD0000UC0	Ultracap module

(*) The multiple packages are not supplied with connectors

Table of valve compatibility

Model	Valve
CAREL	E*V****
ALCO	EX4; EX5; EX6; EX7; EX8 330 Hz (supported by CAREL); EX8 500 Hz (from ALCO specifications)
SPORLAN	SEI 0.5-11; SER 1.5-20; SEI 30; SEI 50; SEH 100; SEH175
Danfoss	ETS 12.5-25B; ETS 50B; ETS 100B; ETS 250; ETS 400; CCM 10-20-30-40; CCMT 2-4-8-16-24-30-42; Colibri
CAREL	Due EXV CAREL collegate insieme / Two CAREL EXV connected together
SPORLAN	SER(I) G, J, K
CAREL	Eieiettori / Ejectors E2J17AS1N0; E2J23AT1N0; E3J26AT2N0; E3J33AU2N0; E3J39AV3N0; E6J50AV3N0

(ENG) For further information, see the "EEV system guide" (code +030220810) and the user manual (code +0300005EN) available at www.carel.com, under the "Literature" section.

Table of EVD LEDs

LED	on	off	flashing
net	connection made	no connection	communication error
open	valve opening	-	first configuration
close	valve closing	-	first configuration
alarm	alarm active	-	-
power	driver powered	driver not powered	wrong power supply

Note: if open and close LEDs blink at the same time, the commissioning procedure has to be executed.

Display keypad

key function
Prg goes directly to the screen for entering the password to access programming mode
Esc exits programming mode (service, manufacturer) and display;
 • after setting a parameter, exits without saving the change.
ENT in alarm mode displays the alarm queue;
 • in the "manufacturer" level, when scrolling the parameters, shows the help screens.

IMPORTANT WARNINGS

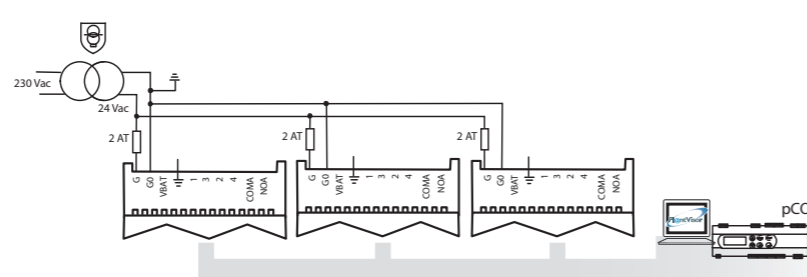
The CAREL product is a state-of-the-art device, whose operation is specified in the technical documentation supplied with the product or can be downloaded, even prior to purchase, from the website www.carel.com. The customer (manufacturer, developer or installer of the final equipment) accepts all liability and risk relating to the configuration of the product in order to reach the expected results in relation to the specific installation and/or equipment. The failure to complete such phase, which is required/indicated in the user manual, may cause the final product to malfunction; CAREL accepts no liability in such cases. The customer must use the product only in the manner described in the documentation relating to the product. The liability of CAREL in relation to its products is specified in the CAREL general contract conditions, available on the website www.carel.com and/or by specific agreements with customers.

Separate as much as possible the probe and digital input signal cables from the cables carrying inductive loads and power cables to avoid possible electromagnetic disturbance. Never run power cables (including the electrical panel wiring) and signal cables in the same conduits.

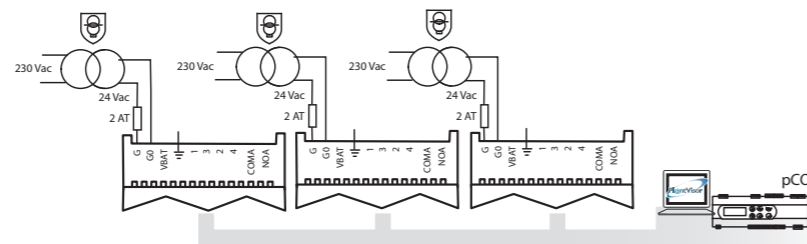
Disposal of the product
The appliance (or the product) must be disposed of separately in accordance with the local waste disposal legislation in force

tLAN, pLAN and RS485 connections and power supply

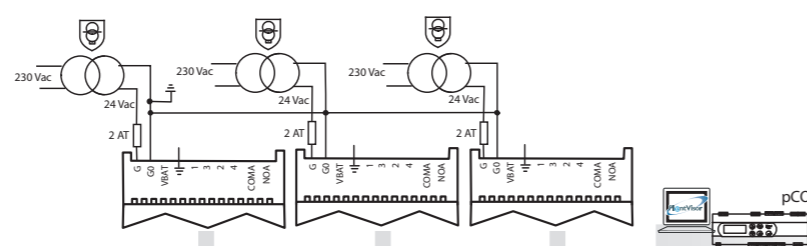
Case 1: a series of drivers is connected in a network, installed in the same electrical panel, powered by the same transformer



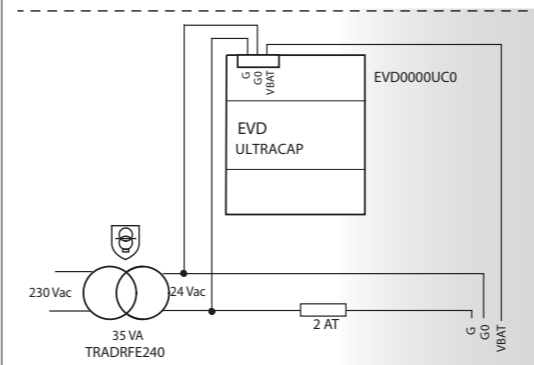
Case 2: a series of drivers is connected in a network, installed in electrical different panels, powered by different transformers (G0 not connected to earth).



Case 3: a series of drivers is connected in a network, installed in electrical different panels, powered by different transformers with just one earth point.



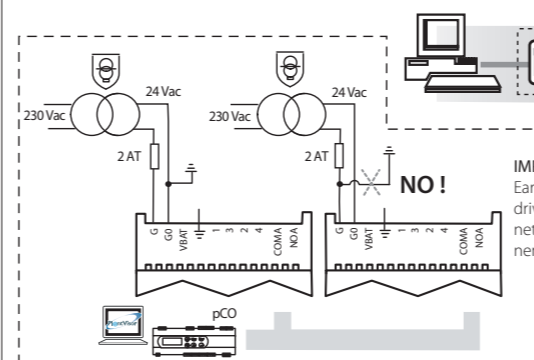
CASE 1:
230 Vac power supply with emergency module



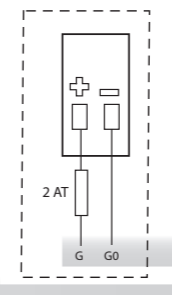
CASE 2:
230 Vac power supply without emergency module



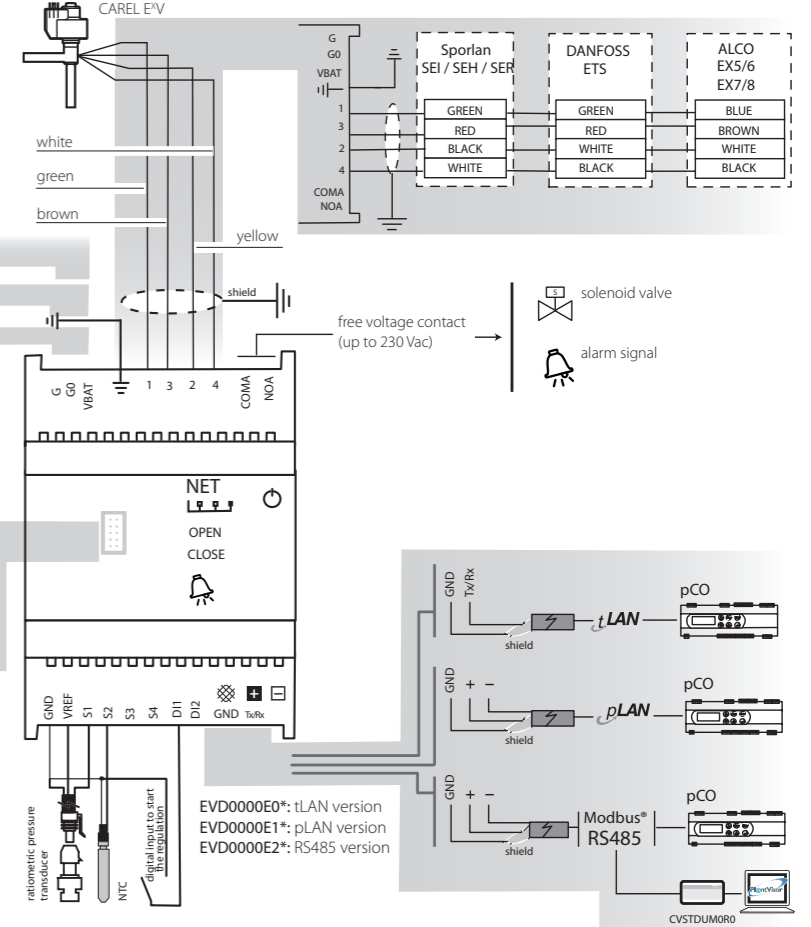
(*) For ALCO EX7 or EX8 use a 35 VA TRADRFE240 transformer



CASE 3:
24 Vdc power supply

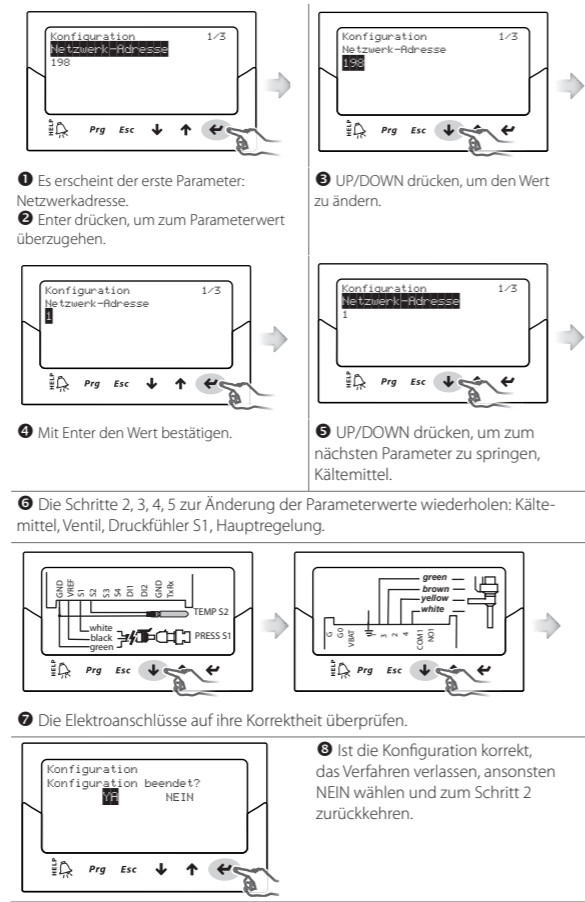


Wiring diagram for superheat control

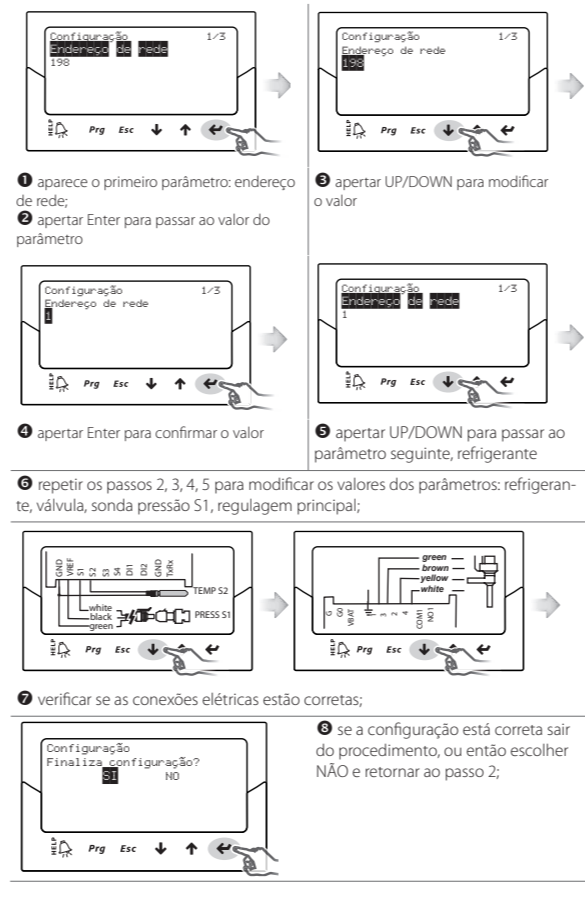


NOTE 1: use a class 2 safety transformer, suitably protected against short-circuits and voltage surges

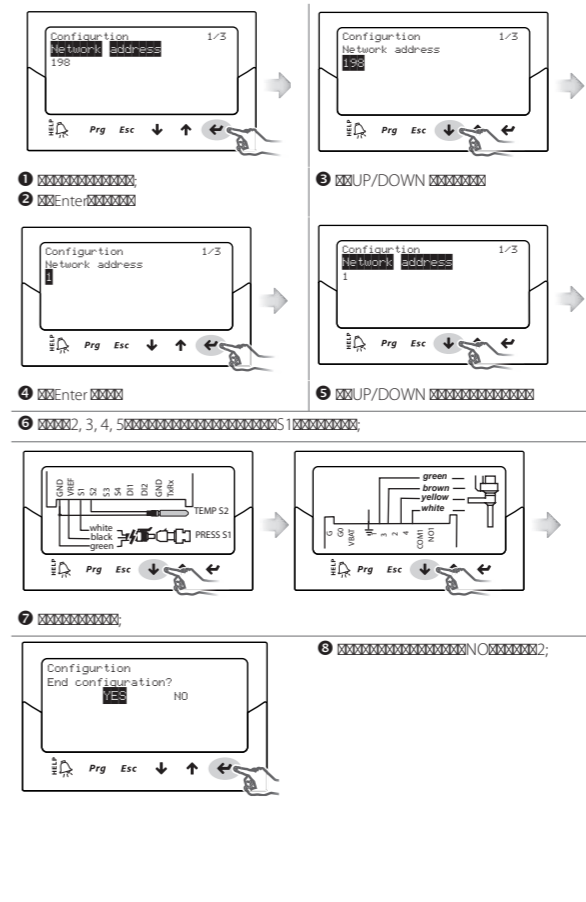
ENG Einstellung der Basisparameter



POR Configuração dos parâmetros base



CHI Configurazione base



RUS Установка основных параметров

